

# **GEO-ENVIRO SUPPORT SERVICES (GUYANA) INC.**

---



- Drilling
- Soil Testing
- Concrete Testing
- Asphalt Testing
- Piling-Q.C.
- Water Sampling
- Surveying
- Consulting
- Contract Administration
- Traffic Management

***PROVIDING QUALITY CONTROL LABORATORY AND FIELD TESTING SERVICES TO THE CONSTRUCTION INDUSTRY***



***VERY PROUD OF MY GUYANESE HERITAGE AND  
TO BE INVOLVED IN THE CONSTRUCTION  
QUALITY CONTROL BUSINESS IN CANADA***



## ***INTRODUCTION***

Over the past five years, the infrastructure network in Guyana was allowed to quickly deteriorate, due to negligence and lack of enforced quality control. Although there has been a major influx of international grants and loans for the reconstruction of roads, bridges, and new highways; several projects suffered political interference resulting in less than acceptable standards.

Geotech Support Services Inc. is a Guyanese owned Canadian company that works closely with project managers, designers, municipalities, and governments, to ensure that project specifications are met prior to stakeholders making payments on the scope of work. With the desire to contribute our knowledge and expertise acquired over the years, we registered our operations in Guyana under the name **GEO-ENVIRO SUPPORT SERVICES (GUYANA) INC.** with the intention of enhancing quality control in both environmental and civil works development.

Enclosed is a simplified model of utilizing a combination of Canadian technology to create employment for engineering graduates and technicians to service the many development projects earmarked for Guyana.

---

**Paul Dayaram**

**President/Owner:**

**Geotech Support Services**

**DCT Field Services**

**Geo-Enviro Support Services**



# ***HOW WOULD THIS BUSINESS BENEFIT GUYANA?***

**It is a generally accepted notion that for too long Guyana has lost adequate guiding standards in many areas of which construction is key.**

**Our business, albeit service oriented, will:**

- **Create key employment for our young people**
- **Train and transfer technology**
- **Introduce technology with soil stabilization techniques that are continually used by developed countries**
- **Enforce specifications and provide the government with informed technical information on project status**
- **Contribute to a more sound infrastructure sector development while recognizing environmental protection standards as being employed in North America**
- **Implement Internationally accepted Standards for Health and Safety in the Workplace**

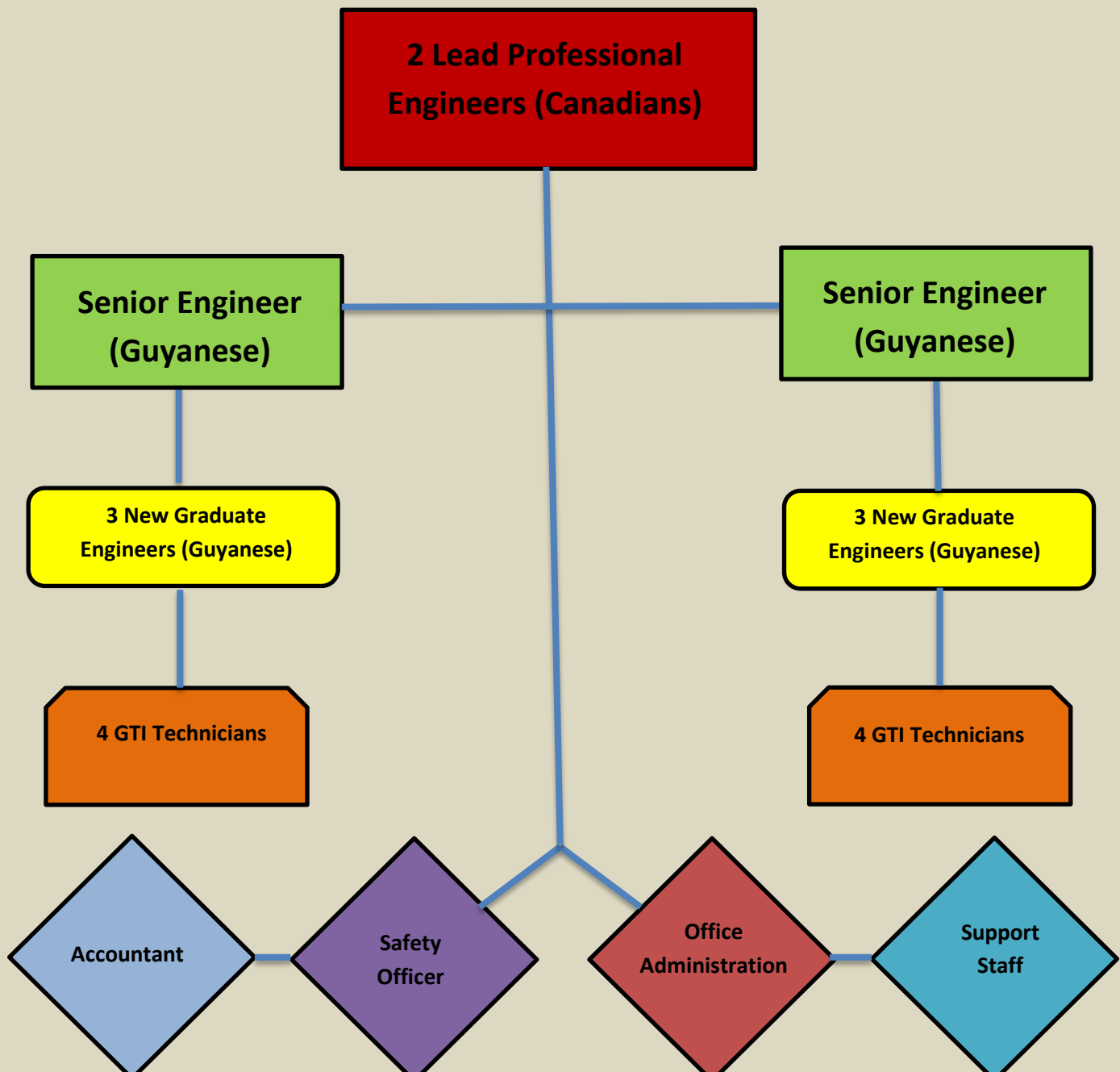


**As a Guyanese owned existing company with its principal owner being a long time employee of the Ministry of Works with the Government of Guyana in the 1980s, we would like to be involved as an entity to provide the following services to the construction, infrastructure, and engineering industry by bringing years of Canadian experience, talent, technology, and financing to set up a facility that will:**

- 1) Employ newly graduated civil engineers from the University of Guyana and from the Guyana Technical Institute.**
- 2) Provide technical training on International Standards and exchange training programs with Canada in the use of state of the art equipment used in the quality control of construction activities.**
- 3) Set up a laboratory for testing concrete and concrete products, asphalt, soil, and steel.**
- 4) Provide soil drilling and sampling together with reporting and recommendations prior to the construction of roads, highways, and bridges.**
- 5) Provide in-field testing during construction to include material samples, compaction testing using nuclear gauges, and sampling of concrete provided by contractors.**
- 6) Introduce the use of soil stabilizing products such as soil-cement, geo-grids, and geo-web to make long lasting roadways into the hinterland.**
- 7) Work with the Ministry of Transportation in implementing standardized Traffic Management Plans that must be adhered to while conducting construction activities on roadways.**
- 8) Implement the use of Sonar Sounding Techniques to quickly determine sediment accumulation in canals and drain ways to adopt proactive cleaning in order to maintain flows during heavy rainfall.**
- 9) Provide safety training to construction employees in WHIMIS, fall arrests, confined space work, and open pits.**

## ***PERSONNEL***

The intention is to provide two lead Canadian Professional Engineers who will head the technical team of locally hired new engineering graduates from the University of Guyana and technicians from the Guyana Technical Institute. A rigid program of hands on training will be provided as the company strives for quality control, contracts administration, and consistency on projects in all disciplines of infrastructure work.



## ***EQUIPMENT AND OTHER RESOURCES***

**In order to provide effective international standard of contracts quality assurance, modern and state of the art equipment will be required. At our Canadian operations we are ready to provide equipment for the following:**

- 1) Soils sampling, drilling, and in-field testing prior to project design.**
- 2) Outfit for a complete soils, concrete, and asphalt laboratory.**
- 3) Mobile facility for onsite quality control on construction projects.**
- 4) Onsite sampling of fresh concrete, freshly laid asphalt, and soil compaction testing using nuclear gauges.**
- 5) Rebar and bridge condition surveys.**
- 6) Impact studies and data collection of the impact of construction activities on the environment.**
- 7) Equipment for developing and implementing proper traffic management during construction.**
- 8) Testing for canal silt accumulation and predictions for de-silting schedules.**



## ***WHAT ASSISTANCE IS REQUIRED FROM THE GOVERNMENT OF GUYANA?***

**In order for our critical service to take off in a timely manner in keeping up with the start of new projects, we are asking the government and more so the Ministry of Public Works to recognize us as an independent materials testing and laboratory services facility with accreditation to certify and act as consultants on these projects.**

**Assistance in the form of expedited processing of required documentations and clearances will be required. Exemptions on duties as for permissible and much needed equipment for scientific purposes will certainly give ease to initial operational cash flow. Initially the company will be leasing a building for its operations but in the future will be seeking to follow set procedures to acquire suitable land to expand and house facilities.**





## ***CONCLUSION***

**In summary, as a member of the Diaspora in response to the call for infusion of skills, technology, and finance, our company is poised to provide a critical service sector in support of the government`s vision for growth and development of Guyana as it becomes the world`s hub of activities.**

**We look forward to the support and encouragement to partner in a changing world of technology.**

---

**Paul Dayaram**

**President/Owner:**

**Geotech Support Services**

**DCT Field Services**

**Geo-Enviro Support Services**



**Extracting samples of failed  
concrete for analysis**



**Soil testing for  
contaminant remediation**



**Working safely on busy  
roadways**





**Top of roof; failed high-rise of an all concrete building**

**Environmental soil sampling.  
Old fuel storage facility**



**Asphalt hot mix emergency fix equipment**



**Sampling and onsite testing of badly damaged roadway or emergency remedial compaction**



**Conducting a bridge condition survey**

**Sampling soils for a new subdivision where machines are inaccessible**





**Using combination of scientific methods and a practical approach in determining sediment accumulation in canals and ponds. – Region of Peel, Ontario**





**Use of GeoWeb synthetic cells for interior road base construction –**

**GeoGrid cells with heavy standing loads, freshly laid**



**Remote areas runway construction using GeoWeb matting**





**GeoWeb on freshly cut roadways**



**Stabilizing conservancy dams**



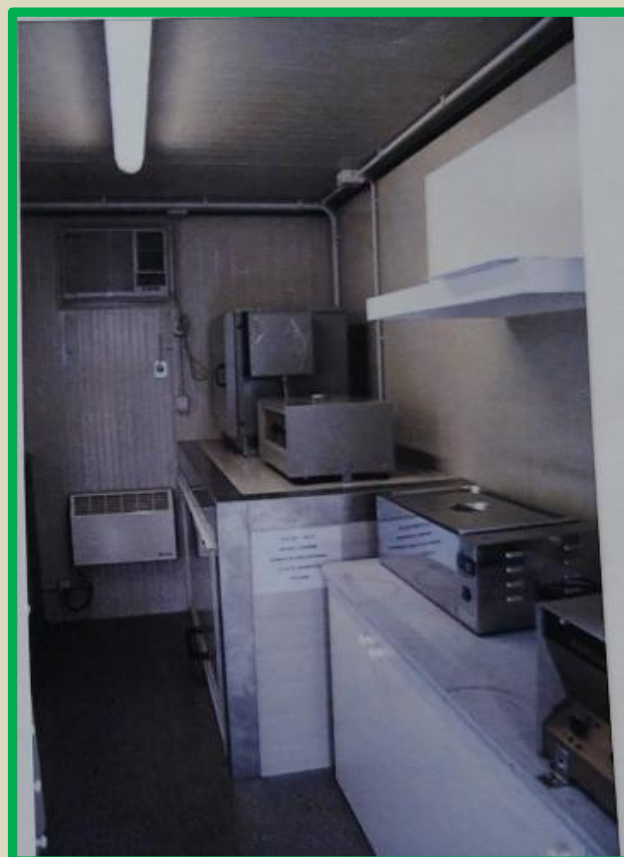
**Deep foundations soils supports systems**





**Fully equipped laboratory for mobile onsite testing of construction activities for soils, pavements, and fresh concrete**

**Typical inside view of mobile laboratory. Facility will be equipped with two technicians and one professional engineer**



**TAKING CONSTRUCTION QUALITY CONTROL LAB TO THE SITE TO**  
**REDUCE WAIT TIME FOR CONTRACTOR MATERIALS APPROVAL**